

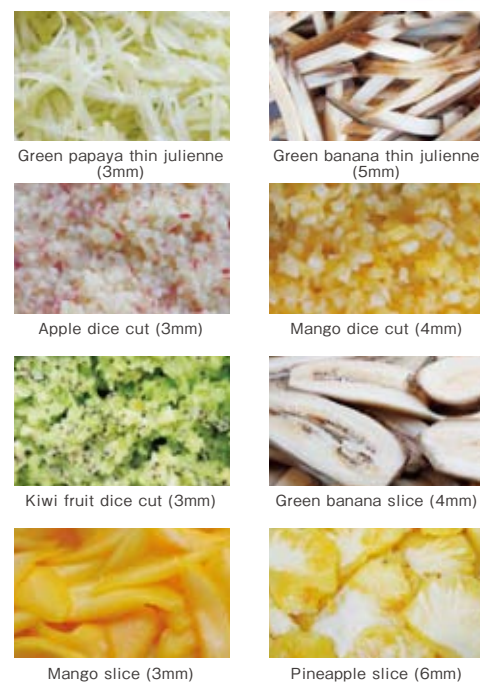
## Super Slicer Series

Cut all foodstuff without wasted,in high quality at the moment! Bring out all the charm of the foodstuff. It will spread the new possibilities.  
Slice, thin julienne, dice are possible by the replacement of cutlery. 3 roles in one.

### VEGETABLE

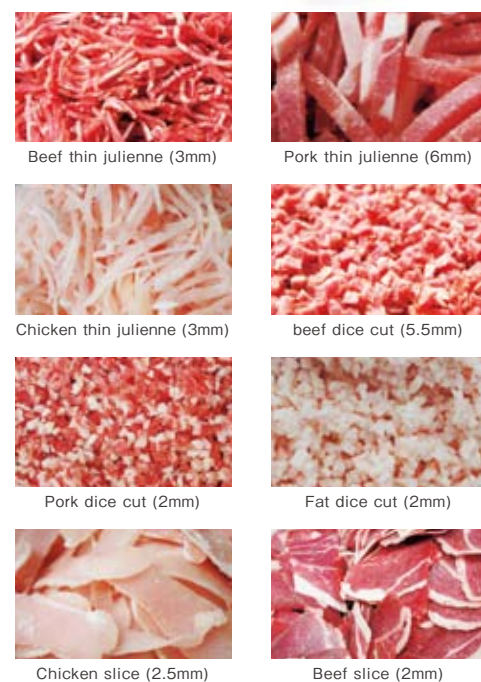


### FRUIT



Due to quickly cut cross-section with sharp knife, it does not broken foodstuff fibers and finished in sharp. Moisture from the foodstuff is not easily flow out. You can take advantage of the food original flavor and texture. May take advantage of the foodstuff original flavor and texture. Evenly cut effect pull out the charm of beautiful looks.

### MEAT



### FISH



Because meat/fish be cut in high-speed processing during in sub-zero conditions of -3 ~ -4 °C, so the propagation of bacteria can be prevented. Enables to keep frozen meat and fish in freshness and taste conditions. It is difference with the normal mince cut, we can provide as the original taste of meat/fish without having to crush the meat/fish fiber.

Versatile Super Slicer / Dicer

## F-2000S

/ F-2000D

【 Application: Slicing, julienne, dice cut】

- Compact body design with multi-function
- Available to store 6 pcs of radishes into drum at one time.



F-2000S / F-2000D

Super Slicer / Dicer

## F-2100S

/ F-2100D

【 Application: Slicing, julienne, dice cut】

- Best sale No.1
- Available to store 12 pcs of radishes into drum at one time.



F-2100S / F-2100D

Super Slicer / Dicer W / Dicer W

## F-2200S

/ F-2200D

【 Application: Slicing, julienne, dice cut】

- Using twice cutlery motor performance
- Available to store 18 pcs of radishes into drum at one time.



F-2200S / F-2200D

	F-2000S / F-2000D	F-2100S / F-2100D	F-2200S / F-2200D
Dimensions	W850×L1050×H1380 (mm)	W1100×L1350×H1550 (mm)	W1400×L1700×H1700 (mm)
Motor	Three phase 200V 1500W + 750W with inverter (for Japan) *1	Three phase 200V 2200W + 750W with inverter (for Japan) *1	Three phase 200V 2200W + 750W×2 with inverter (for Japan) *1
Weight	150kg	220kg	400kg
Operating time	Continuous use	Continuous use	Continuous use
Processing capacity	110~400kg/h	210~1200kg/h	500~2400 kg/h
Exterior	SUS 304 stainless steel	SUS 304 stainless steel	SUS 304 stainless steel
Safety device	Circuit breaks by sensor detection	Circuit breaks by sensor detection	Circuit breaks by sensor detection

User: Vegetable processing factory, pickles manufacturing plants, super market processing center, seasonings manufacturing plants, seafood processing plants, dumplings manufacturing plant etc.

Cutting size ( common to 3models)

Slicing Slices : 0.3 ~ 10mm

Julienne Strip Cuts : 0.7 ~ 10mm

Dicing Dices : 1.2 ~ 10mm

\*1 Adaptable size cutting might be different by the foodstuff. Please contact us for more information.

Water Flaw Cycling Round Blade Sharpener Delux

## F-200BT

【 Applications: Sharpening round blades and other knives】

- The taste of foods changes depending on the blade's sharp !
- Suitable for sharpening large round blades.
- The difference comes on good effective into food stuff's freshness-keeping.
- Available to sharpen small round blades and knives.

- Accessory / Grindstone #800 (Grindstone for finishing)
- Optional / Rough grindstone (#80/100)
- Dimensions : W450 × L360 × H600 (mm)
- Motor : Single phase 100V 80W (for body) \*1 100V 40W (for head) \*1
- Weight : 20kg
- Operating time : 60 min
- Grindstone : Exterior with φ 200 interior with φ 98
- Models whose round blades apply : F-2000S/D, F-2100S/D, F-2200S/D



Carrot Vertical Peeler

## F-3300C

【 Applications: Peeling carrot's skin】

- Just insert a carrot.
- Peel cleanly, no need shorting.

- Dimensions : W550 × L750 × H1630 (mm)
- Motor : Three phase 200V 90W with inverter (for Japan) \*1
- Weight : 65kg
- Operating time : Continuous use
- Processing capacity : 800 ~ 1300pcs/h
- Exterior: SUS304 stainless steel

User: Factory of making cut vegetable, super markets, restaurant chain store's food preparations.

Machine is easy to use further without waste by improved! !

Renewal



(Enlarged: Peelers)



(Enlarged: Shooter)

Numbers of peeler 12 pieces to 8 pieces

We repeated peeling-test by using variety sizes of carrots, successfully modified the peeler's curve to fit more carrots skin to peel, significantly reduced the left peeled. Further more, the numbers of peelers were reduced. It may save peelers maintenance cost.

Shooting slider → basket type

New type of shooter-box being adopted. Peeled carrot fall down through the center-hole, only skin accumulate in the shooter-box. It eliminates the hassle of sorting the skins and contents. Effect your workability be greatly increased.



Radish Vertical Cutter

## F-3300V

Cutting lengthwise along the fibers!

Radish Vertical Whole Puncher

## F-3300U

Punch out along the fibers!

【 Applications: To divide 2,4,6,8pieces vertically & punching whole radishes etc.】

- The curved blades fit the surface of the radish.
- The luster and freshness of the peeled radishes are retained.
- Just set in a carrot.
- Able to vertically divide 2,4,6,8pieces & whole punching by changing cutlery block unit.

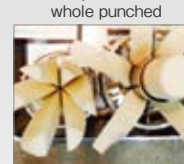
- Dimensions : W520 × L1300 × H1900 (mm)
- Motor : Three phase 200V 200W with inverter (for Japan) \*1
- Weight : 55kg
- Operating time : Continuous use
- Processing capacity : 500 ~ 1000pcs/h
- Exterior: SUS304 stainless steel
- \*1 Able for peeling φ 50 ~ φ 110 radishes.

User: Factory of making pickles, garnishes and vegetable processing.



## 等

Vertically divided cut & whole punched



List of cutlery block units



8pieces (F-3300V) 6pieces (F-3300V) 4pieces (F-3300V) Whole punched (F-3300U)

Core Cutter

## F-ST1

Completely removes the core of cabbage in a moment!

- 【 Applications: Removing the core of cabbage and Chinese Cabbage 】
- Equipped with a center guide.
- Possible to change the length of the core to be removed.
- By using drill's rotary motion scraped off the core.

- Dimensions : W950 × L830 × H1460 (mm)
- Motor : Three phase 200V 90W × 2 + 150W (for Japan) \*1
- Weight : 85kg
- Operating time : Continuous use
- Processing capacity : 600 ~ 800pcs/h
- Exterior: SUS304 stainless steel

User: Factory of vegetable processing.



## 念



Cabbages

Cube Cutter

## M-RC40

Suitable for cutting cabbage into square pieces!

【 Applications: Cutting vegetables such as cabbages, lettuces and Chinese Cabbages into square pieces 】

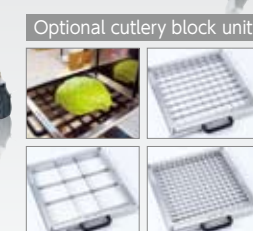
- All you haveto do is to set vegetables and turn on the switch.
- Square cut cabbages best for fried noodles, fried vegetables cake, fried vegetables.

- Dimensions:W700 × L755 × H1260 (mm)
- Motor: Single phase 100V 400W (for Japan) \*1
- Weight : 60kg
- Operating time : Continuous use
- Processing capacity : 400 cabbages/h
- Cutting dimensions: 40mm square (customise cutting block is available.)
- \*1 For cutting cabbages, size 40mm up be recommended.

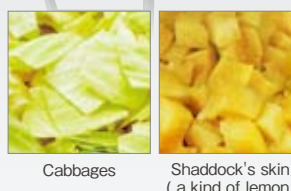
User: Factory of vegetable processing,fruit processing.



\* Put the cabbage which was core removed.



Optional cutlery block unit



Cabbages Shaddock's skin (a kind of lemon.)

Electric V Slicer

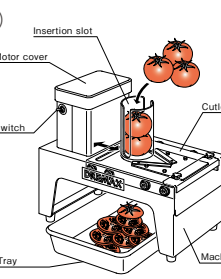
## M-300V

50 slices per minute

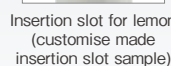
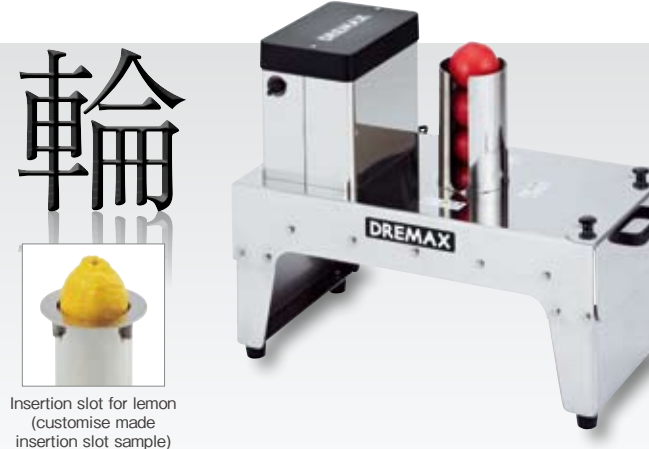
【 Applications: Horizontal slicing 】

- For slicing tomatoes, onions, lemons, apples, oranges and others.
- Sanitary because it is made of stainless steel.

- Dimensions : W300 × L600 × H490 (mm)
- Motor: Single phase 100V 90W (for Japan) \*1
- Weight : 22kg
- Operating time : Continuous use
- Processing capacity : 50pcs/min
- Cut size : 1 to 5mm thickness
- Exterior: SUS304 stainless steel
- Insertion slot: φ 93 (mm)
- \*1 Depending on the foodstuff, a special insertion slot be needed.



Insertion slot Motor cover Cutter board Tray Machine body



Insertion slot for lemon (customise made insertion slot sample)

\* We have model MV-50D for processing small quantity.

Bulk Siraga-negi Cutter (Fine strips of raw cibol)

## F-880

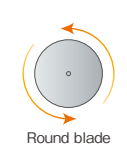
Just put in the leeks as they are! 100% yield!

【 Applications: Cutting whole leeks for fine-thin strips (siraga-negi) 】

- A stainless steel round blade is used.
- Significantly increased durability and sharpness.

- Dimensions : W740 × L660 × H1350 (mm)
- Motor: Single phase 100V 400W (for Japan) \*1
- Weight : 55kg
- Operating time : Continuous use
- Processing capacity : 80 ~ 140kg/h
- Cutting block: 2mm
- \*1 Cutting size less than 2mm could not be manufactured.
- \* F-2000S can do size lower than 2mm.
- Exterior: SUS304 stainless steel

User: Factory of vegetable processing.



Round blade



Cutlery block unit